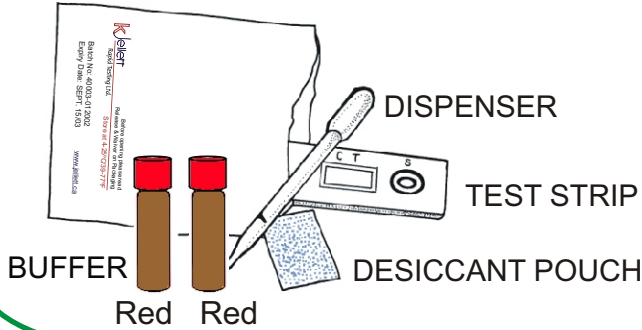


# Field Instructions

# AOAC EXTRACTION METHOD

- 1** •Check Expiry Date  
•Check Desiccant Pouch:  
**Blue = OK**  
**Pink = Do not use test**



- 2** Before using, hold buffer vial as shown, 1 inch above table.



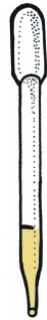
Tap 3 times on a table to get the liquid from the lid to the vial.

1"

Table

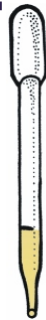
**3**

Add 100  $\mu$ L of shellfish extract (to black line of dispenser) to 1.5 mL of water and mix.



To mix, cap vial and shake thoroughly.

**4**

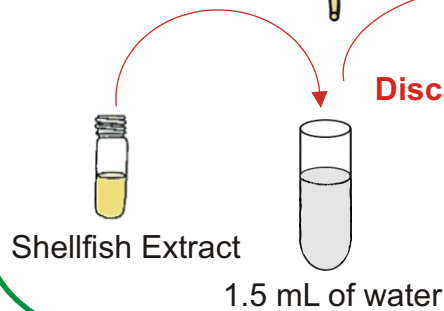


Use a new dispenser and take 100  $\mu$ L of the shellfish extract/water mixture. Add to vial A and mix.

**5**

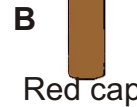
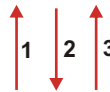


Take 100  $\mu$ L from vial A. Add to vial B and mix.



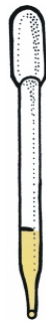
**Discard dispenser.**

Mix by inserting tip into liquid and pipetting at least 3 times.



**6**

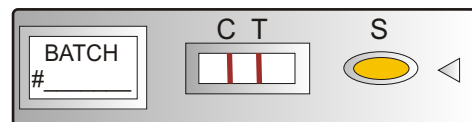
Place 100  $\mu$ L of mixture from vial B into the sample well "S".



**DO NOT REUSE DISPENSERS**



**7**



Read your results after 45-75 minutes.

Turn page for C & T Line Interpretation.